



# EAGLE PRESS

## Gap Frame Presses

### GZ & GL Series

#### 44T - 440T



Safeties conform to:  
CE (EN-16092 : 2018)  
OSHA 1910.217  
CSA-Z142  
NR-12

ISO 9001:2015  
ISO 14001:2015  
OHSAS 18001 :2007

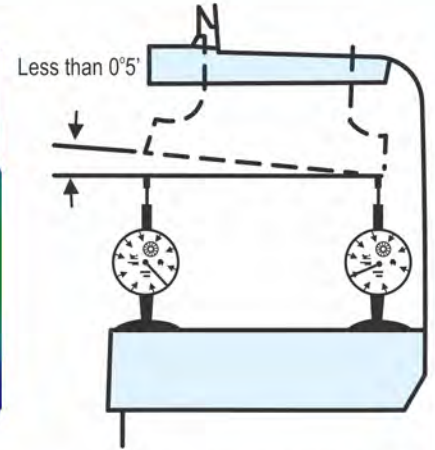
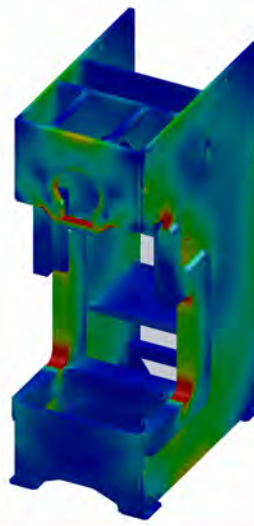
## Quality you can Trust

Rigidity • Precision • Reliability

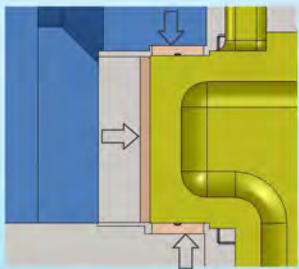


## Rigidity

- Frame fabricated from tested steel plates and stress relieved to ensure uniform stress distribution, better stability and fatigue free long life of the frame.
- Finite Element Analysis software used to verify fatigue life of stress relieved Press structure and to enable maximum rigidity.
- Stronger and symmetric frame having 10% less stress with reinforcement on both sides.
- High rigidity of frame reduces angular deflection thereby maintaining alignment of top and bottom dies. It increases die life and produces better quality stamped parts.



Measured at front and rear of Slide under full balanced load on GZ-160



## Accurate Slide & Guide

- Extra long six point guides to ensure accurate slide guiding.
- Non Ferrous Liners.
- Accurately machined on CNC Machines.

## Precise and Vibration Free Transmission

### Crank Shaft

Forged from Normalized Alloy Carbon Steel, Ultrasonically Tested.

CAD analysis ensures elimination of stress concentrations and metal fatigues.

### Gear

Gears of drive train machined to precision grade, conforming to DIN Grade 7 or AGMA 10 and better, for smooth torque transmission and vibration free operation.

### Pinion

Forged Alloy Steel, Hardened & Tempered, Ultrasonically Tested, Accurately Machined and Ground.

### Connecting Rod

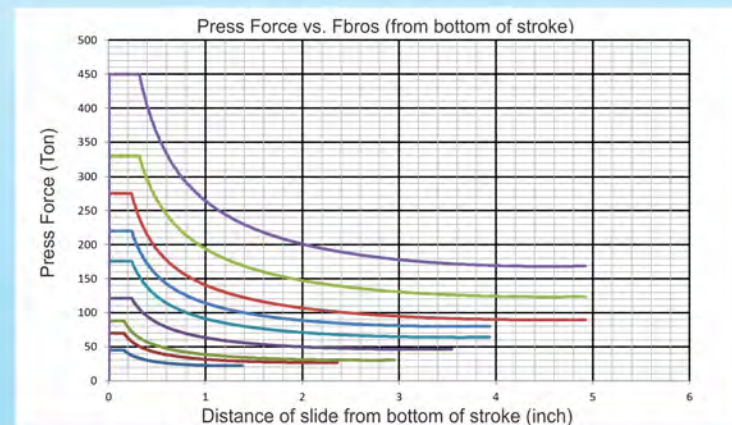
Steel Casted, Normalized and Ultrasonically Tested.

### Flywheel

Dynamically balanced Flywheel for long life of bearings.



## Highest Available Work Energy per Stroke in its Class



## Wet Clutch and Brake

- Pneumatically actuated wet running Clutch & Brake for easy maintenance and service.
- Clutch & Brake controlled by Dual Solenoid Valve.
- Friction lining working in oil bath.





# FEATURES

## Hydraulic Overload Protection

Hydraulically operated fast acting Over Load protection mechanism mounted on slide for better performance thereby preventing damage to the Press and Dies



## Operator Control Station & Safety

- Programmable Logic Controller with user-friendly operator Interface has Operator Screens with Diagnostic features, improved through continuous feedback from Press users.
- Rotary Motion Detection system is provided for operator safety.
- Air Reservoir provided with Safety Valve and Drain Cock.
- Compliance with CE/OHSA Safety regulations provided on demand.

## Lubrication



- Automatic Grease Lubrication system lubricates Crank Shaft Bushes, Connecting Rod Bushes and Slide Guides.
- Oil Sump Lubrication for Main Gear Train for effective lubrication and heat dissipation.
- Lubrication is monitored through Progressive Lubrication Supply Line to give fault signals on HMI screen.

## Oil dipped Pitman Screw

- Slide adjustment threads oil dipped to reduce friction.
- Prevents jamming and increases life.



## Pneumatic Die Cushion

- Piston type Pneumatic Die Cushion ensures Long life. It is Maintenance friendly and easy to remove & install.



## Standard Accessories

- Pneumatic Counter Balance Cylinders
- Hydraulic Overload Protection
- Motorized Slide Adjustment
- Automatic Forced Lubrication
- Operator Panel with PLC & HMI
- Wet Clutch & Brake
- Emergency Stop Buttons
- Digital Die Height Indicator
- Two Hand Push Button Station
- Production Counter
- Anti-Repeat Safety Device
- Rotary Cam Limit Switches
- Die Area Light
- Power Socket
- Photo Electric Guards

## Optional Accessories

- Pneumatic Die Cushion
- Variable Speed through AC Inverter
- Tonnage Display Monitor
- Quick Die Change System
- Anti Vibration Mounts
- Auto Coil Feeding System
- Mis Feed Detection Socket
- Metallic Guards & Covers
- Cam Operated and Direct Air Socket
- Mechanical Knock Out
- Safety Block

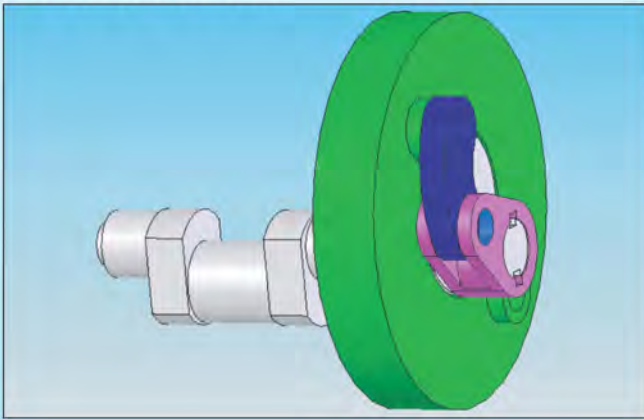


## EAGLE RHINO - LINK DRIVE GAP FRAME PRESSES (GL SERIES)

**Eagle Rhino Link Drive Presses** offer low speed in working zone resulting in increased metal flow time as the slide remains in the working position for more than 40% of the time compared to conventional drives. The approach & return speeds are higher, to maintain cycle time.

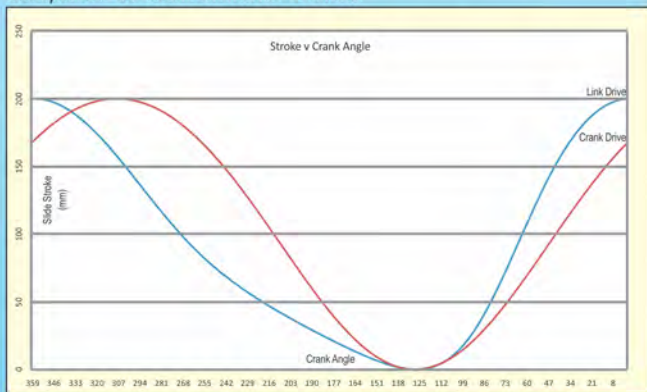
- **IMPROVED DIE LIFE**
- **LOWER PART REJECTION**
- **BETTER QUALITY PARTS**
- **HIGHER PRODUCTION RATE**

### 3D view of Link



**Link Drive Mechanism  
useful for  
Draw, Bottoming and Coining Operations**

*The graph demonstrates the higher time available during working stroke in case of Eagle Link Drive Presses, compared to Conventional Drives.*



# SPECIFICATIONS

Tonnage	Unit	40	63	80	110	160	200	250	315	400
Models		GZ	GZ	GZ	GZ/GL	GZS/GZ/GL	GZS/GZ/GL	GZ/GL	GZ/GL	GZ
Maximum Capacity	US Ton	44	70	88	121	176	220	275	347	450
Rated distance	inch	0.16	0.16	0.16	0.24	0.24	0.24	0.24	0.31	0.31
Speed (Fixed spm vary $\pm 10\%$ )	spm	65	60	60	45	45	40	40	40	30
*Speed (Variable)^	spm	45-85	40-80	40-80	30-60	30-60	25-50	25-50	25-50	20-40
Stroke Length - Fixed	inch	2.7	4.7	5.9	7.1	7.9	7.9	9.8	9.8	9.8
Throat (t)	inch	8.8	9.8	12.2	14.0	15.7	16.7	18.7	18.7	18.7
Shut Height (s) Stroke Down Adjustment Up (SDAU)	inch	9	11.8	12.8	13.8	15.7/19.7/19.7	17.7/21.7/21.7	23.6	23.6	23.6
Slide Adjustment	inch	2.4	2.8	3.1	3.1	4.7	4.7	4.7	4.7	4.7
Slide Face (a x b)	inch	15.7 x 13.7	19.7 x 15.7	20.7 x 17.7	24.6 x 19.7	27.6 x 22.8	33.1 x 25.6	37 x 27.6	43.3 x 31.4	43.3 x 31.4
Bolster Size (c x d)	inch	31.4 x 17.7	35.4 x 19.7	39.4 x 24.4	45.3 x 28	49.2 x 31.5	57.1 x 33.5	57.1 x 37.4	64.9 x 37.4	64.9 x 37.4
Bolster Thickness (f)	inch	3.5	3.5	3.9	4.5	5.5	6.3	6.3	6.3	7.4
Height of Bolster Surface from Floor (g). (without AVM pads)	inch	31.5	35.4	35.4	35.4	35.4	39.4	43.3	47.2	61
Main Motor Power	kW HP	3.7 5	5.5 7.5	7.5 10	11 15	15 20	15 20	18.5 25	22 30	37 50
*Die Cushion Capacity at 7kg/sq.cm.	kN US Ton	23 2.5	36 4	36 4	63 7	100 11	140 15.4	140 15.4	140 15.4	250 27.5
Die Cushion Stroke Length	inch	1.3	2.3	2.9	3.5	3.9	3.9	4.9	4.9	4.9
Die Cushion Pad Area	inch	11.8 x 9.1	13.8 x 11.8	17.7 x 12.2	19.7 x 17.7	23.6 x 17.7	23.6 x 22	23.6 x 22	23.6 x 22	29.5 x 27.5
#Overall Dimensions (n x l x m)	inch	104.3x57x55.1	108.2x62.9x59	133.8x70.8x61	133.8x82.6x64.9	145.6x90.5x68.8	163.3x94.4x76.7	175.5x102.3x76.7	190.9x106.3x78.7	236.2x110.2x90.5

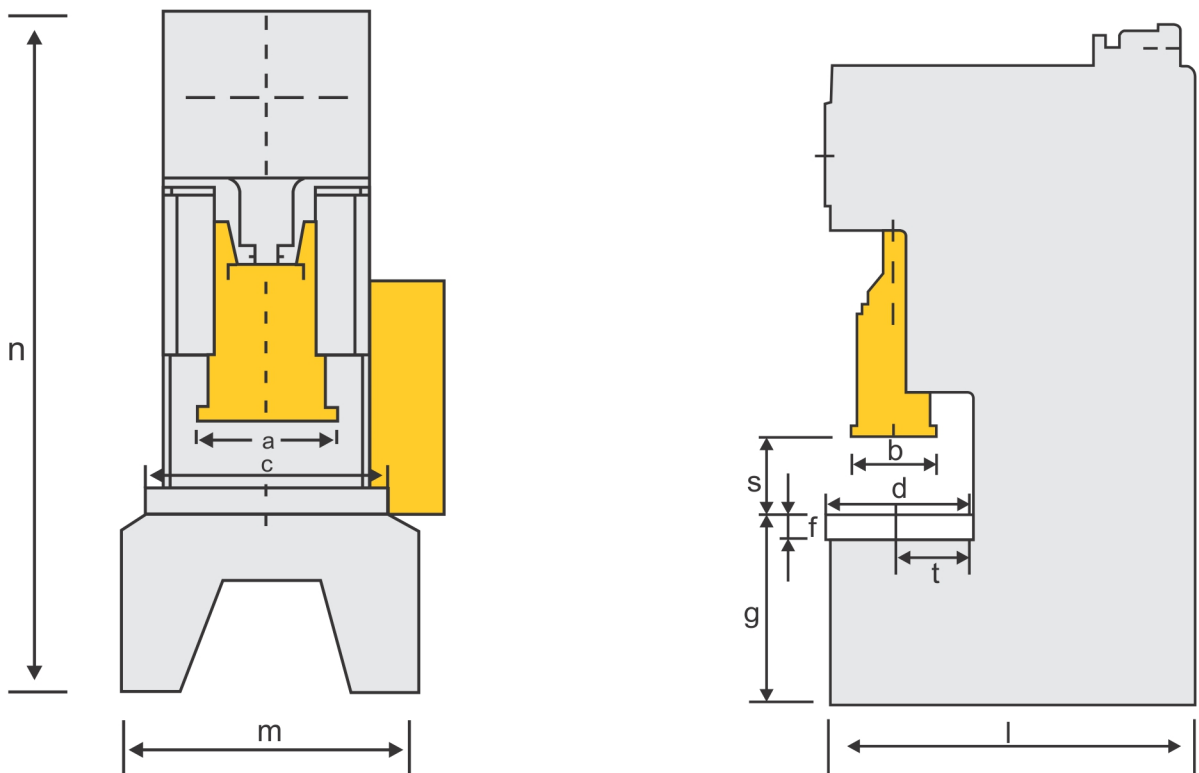
GZ & GZS: Standard Presses. GL: Link Drive Press.

\* Optional at extra cost.

^ Single stroke working is recommended up to mid SPM only.

# Overall Dimensions of GL Series are slightly different.

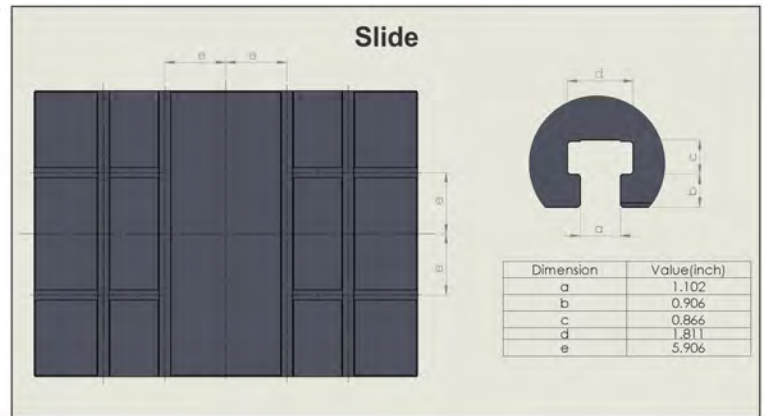
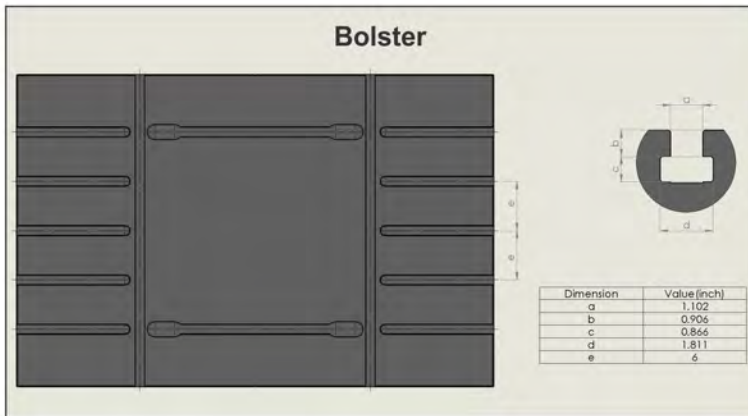
- Approx Dimensions are in FPS Units, Metric can be provided on Demand.







A battery of Presses (40 T to 300 T Capacity) for production of components



Approx Dimensions are in FPS Units, Metric can be provided on Demand

## Wide Range of Presses

Servo Presses • Transfer Presses • Progressive Presses • High Speed Presses • Hot Stamping & Hot Forming Hydraulic Presses  
 Standard Straight Sided Mechanical & Hydraulic Presses • Blanking Lines • Tandem Press Lines - Mechanical & Hydraulic  
 Cold Forging Presses • Tryout & Die Spotting Presses • Gap Frame & Ring Frame Power Presses • Special Purpose Presses



**EAGLE PRESS**  
 & Equipment Co. Ltd.

5170 O'Neil Drive Oldcastle Ontario, Canada NOR 1L0  
 E-mail: sales@eaglepresses.com  
 www.eaglepresses.com

An **ISGEC** Group Company



**EAGLE PRESS**  
 AMERICA INC.

107B Flex Drive Portland, Tennessee 37148  
 1 (519) 737-1593

Some of the accessories / fitments shown in the reference photograph may not be part of Standard equipment supplied.  
 Eagle Press reserves the right to change specifications without prior notice.  
 Details given in this Brochure are indicative & may change.